



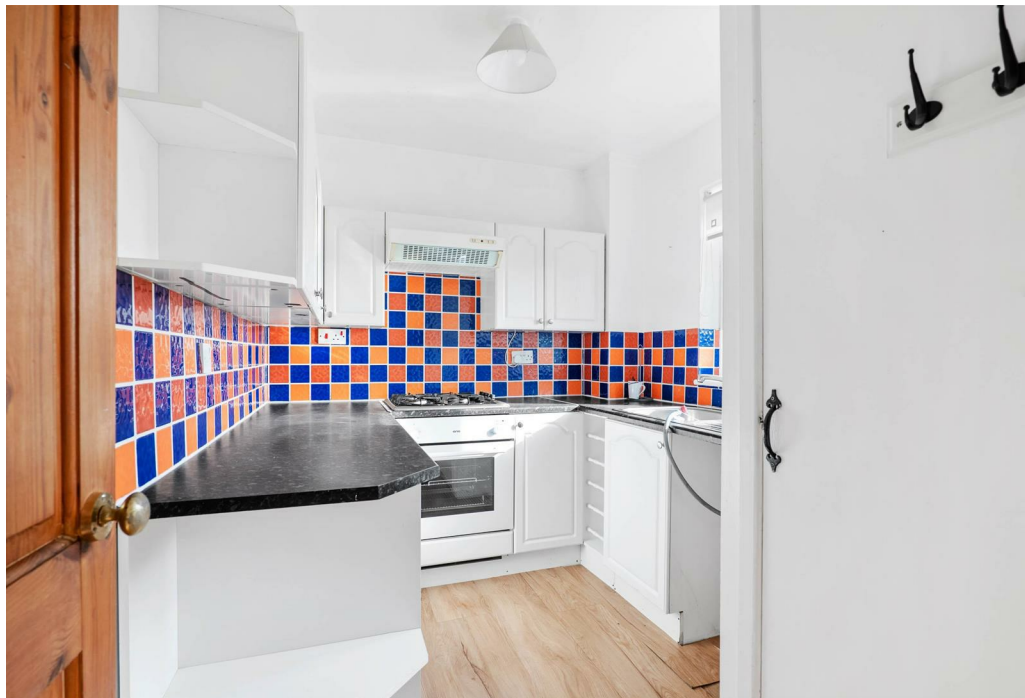
Church Street, Evesham, WR11 1EB

Property Description

CHAIN FREE FIRST FLOOR FLAT WITHIN WALKING DISTANCE TO TOWN

This one bedroom, first floor flat is situated within walking distance to the town centre and is offered to the market with no onward chain. The property comprises; communal entrance, first floor to flat entrance, hallway, living room with dual aspect windows and facing south, kitchen with built in storage cupboard, master bedroom and bathroom. Externally, the property has a single garage en bloc with up and over door. Other benefits include gas central heating throughout and double glazing.



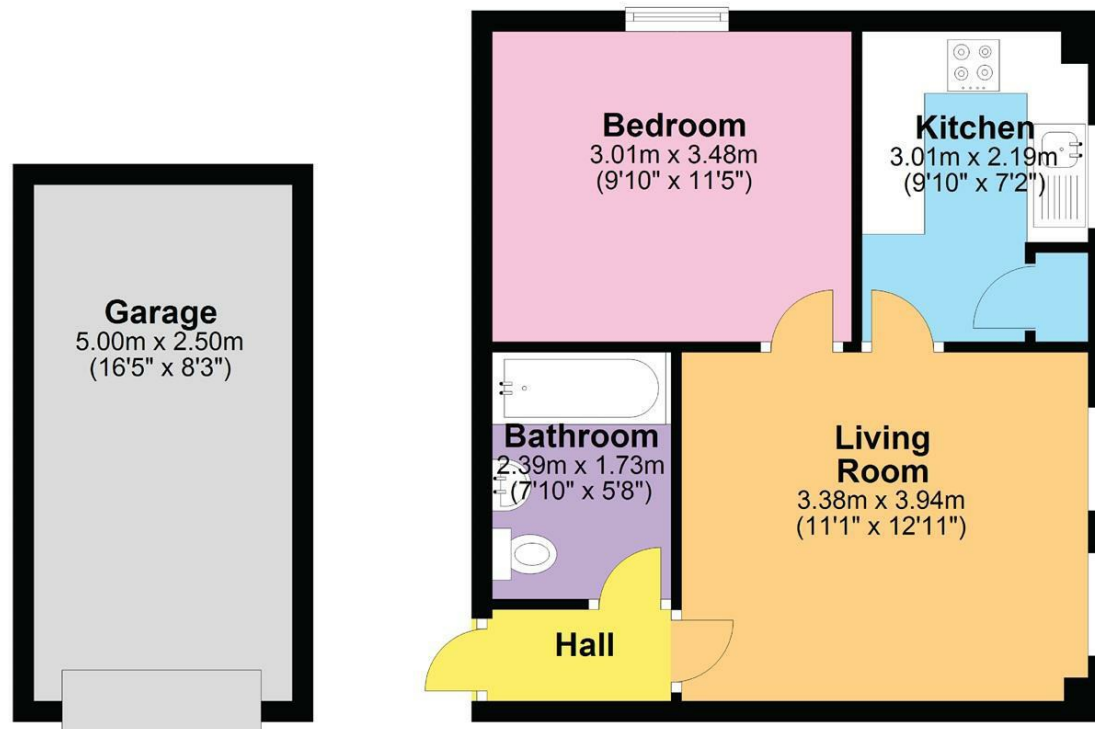


Key Features

- FIRST FLOOR FLAT
- CLOSE TO TOWN CENTRE
- CHAIN FREE
- 144 YEARS REMAINING ON THE LEASE
- GARAGE EN BLOC
- EPC RATING - C

First Floor

Approx. 49.9 sq. metres (537.6 sq. feet)



Total area: approx. 49.9 sq. metres (537.6 sq. feet)

DISCLAIMER - Floor plans shown are for general guidance only. Whilst every attempt has been made to ensure that the floorplan measurements are as accurate as possible, they are for illustrative purposes only.